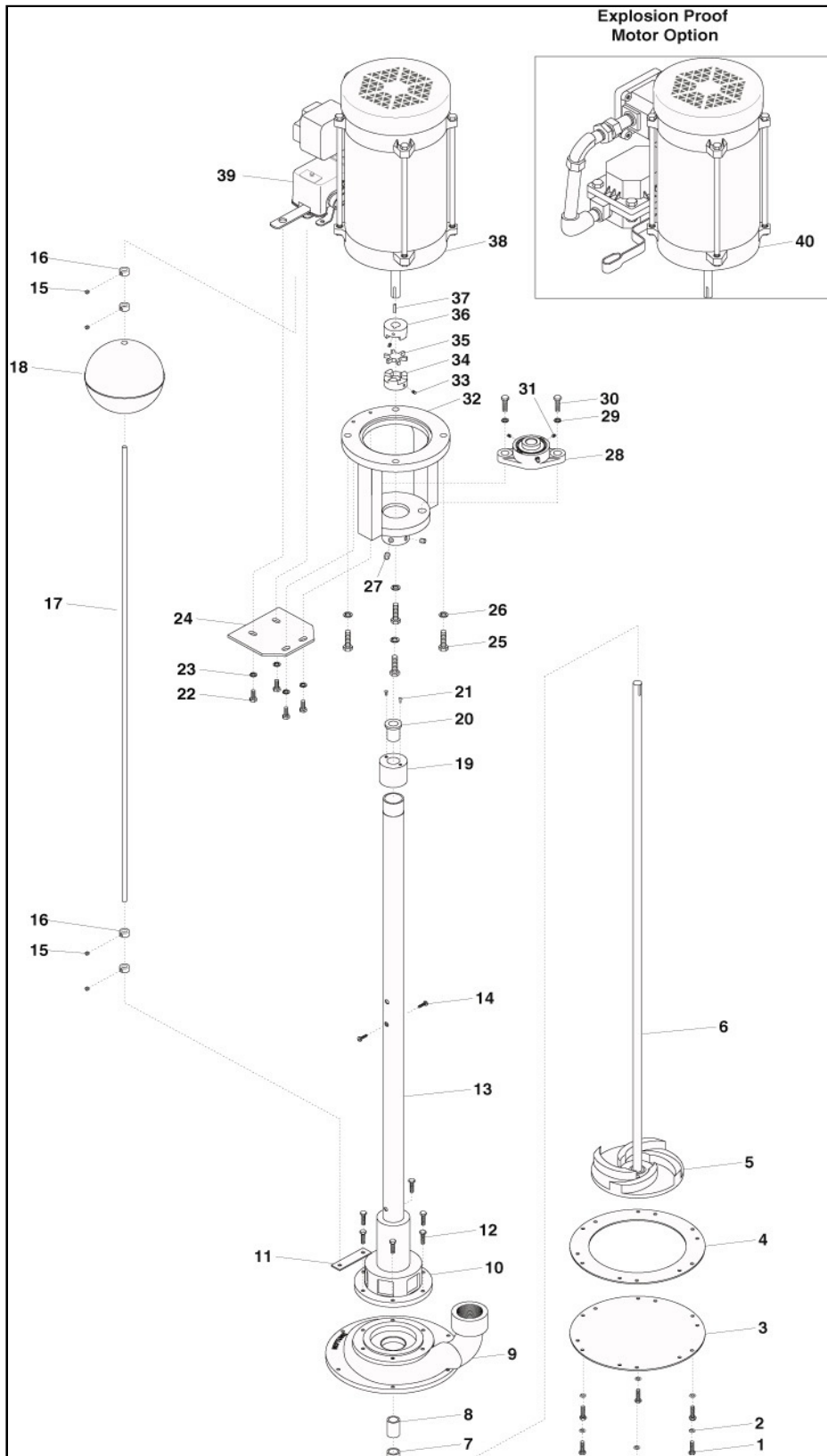


# HD Pump Stainless Steel Exploded View Parts Breakout



<b>Drawing #</b>	<b>Description</b>	<b>Neptune Part #</b>	<b>Quantity</b>
1	Bottom Bolt	NB_00500	6
2	Bottom Washer	NB_00901	6
3	Bottom Plate	HD_021_01	1
4	Bottom Gasket	HD_021_03	1
5	Impeller Stainless Steel HD3	HD_019_02	1
5	Impeller Stainless Steel HD4	HD_019_12	1
5	Impeller Stainless Steel HD5	HD_019_36	1
6	Shaft	HD_030_01	1
7	Flange Bushing Bottom	HD_017_01	1
8	Straight Bushing Bottom	HD_016_01	1
9	Base Stainless Steel HD3	HD_018_70	1
9	Base Stainless Steel HD4	HD_018_71	1
9	Base Stainless Steel HD5	HD_018_72	1
10	Inlet Stainless Steel	HD_015_65	1
11	Trip Rod Guide	HD_032	1
12	Inlet Bolts	NB_01550	5
13	Column Stainless Steel	HD_009_040.50	1
14	Bushing Holder Screws	NB_01100	2
15	Collar set Screw	NB_01400	4
16	Trip Rod Collar	HD_027_01	4
17	Trip Rod	HD_028	1
18	Float Ball	LD_007_01	1
19	Intermediate Bushing Holder PTFE	HD_012_02	1
20	Intermediate Bushing	HD_011_01	1
21	Bushing Screws	NB_01000	2
22	Switch Mount Bolts	NB_00500	4
23	Switch Mount Lockwashers	NB_00600	4
24	Switch Mounting Plate Reg	HD_025_01	1
24	Switch Mounting Plate ExPrf	HD_025_05	1
25	Motor Bolts	NB_00800	4
26	Motor Lockwashers	NB_00900	4
27	Motor Mount Set Screw	NB_01400	2
28	Flange Bearing	HD_007_01	1
29	Bearing Mounting Lock Washer	NB_01600	2
30	Bearing Mounting Bolt	NB_01550	2
31	Bearing Set Screw	NB_01680	2
32	Motor Mount	HD_002_01	1
33	Coupling Set Screw	NB_01680	1
34	Shaft Coupling	HD_004_01	1
35	Coupling Spider	HD_004_05	1
36	Motor Coupling	HD_004_04	1
37	Motor Drive Key	MTR_1_500	1
38	Motor	VARIOUS	1
39	Float Switch Std	HD_024_01	1
39	Float Switch ExPrf	HD_024_35	1
40	Explosion Proof Motor Option	Call for Part Number	1